

# Bicla-R – Metropolitan Cycling Network: Analysis, Modelling and Support Tool for Planning and Decision Making

## Summary

The Bicla-R is a project that aims to develop a metropolitan evidence-base and transport planning online tool to prioritize investments in active transport, in order to uptake cycling levels in the 18 municipalities of the Metropolitan Region of Lisbon. It is funded by [Transportes Metropolitanos de Lisboa](#).

Planning of the infrastructure needed to change mobility patterns requires high-quality evidence. Data and models are needed to ensure cost-effective investment, enabling new infrastructure to be planned where it is most needed. In the case of cycling, the transport mode that has the greatest potential to replace unnecessary and unhealthy short car trips into urban centres, this means designing efficient cycleways and safe street connections. The Bicla-R aggregates official information and models bike usage scenarios, to inform decision-makers of which infrastructures have the greatest potential impact in changing behavior, and assist planners to meet sustainability commitments

Bicla-R aims to use open data and tools and make available the outcome tool in a public website for planners, practitioners, and general audience, as well as a public source code repository of the tool and its manuals.

The project will extend methods developed in the UK for active transport planning and apply them to Portuguese cities, to support central and local government investment in cost-effective infrastructure. The [Propensity to Cycle Tool \(PCT\)](#) is a research project and transport planning tool that was funded by the UK Department for Transport (DfT). Since its inception in 2015, the tool has been used by 50+ Local Authorities and has informed £500m+ of investment.

This project will boost the research network and bilateral collaboration between the U-Shift lab of CERIS (Civil Engineering Research and Innovation for Sustainability) of Instituto Superior Técnico and the ITS ([Institute for Transport Studies](#)) of University of Leeds, gathering Rosa Félix, Robin Lovelace, and Filipe Moura.

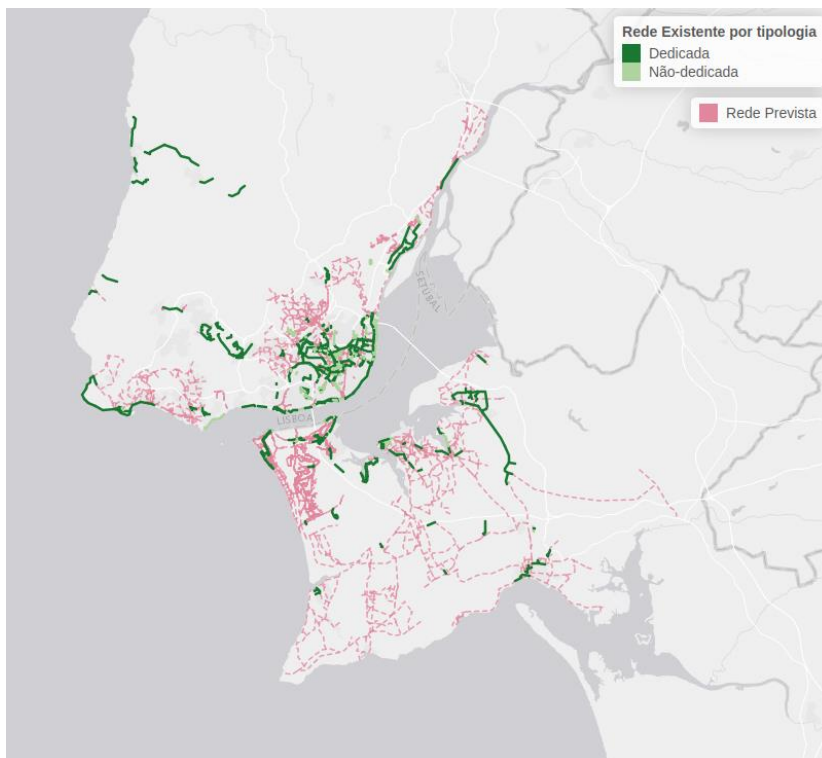


Figure 1. Comparison with the cycling network plans by Municipality.

# BICLA-R

## Project Reference

1018P.06096.1.01.01

## Leading Institution

CERIS – Civil Engineering Research and Innovation for Sustainability (Portugal)

## Partners

ITS – Institute for Transport Studies University of Leeds (United Kingdom)

## CERIS Principal Investigator

Filipe Moura ([fmoura@tecnico.ulisboa.pt](mailto:fmoura@tecnico.ulisboa.pt))

## CERIS Research Team

Rosa Félix

## Funding

Transportes Metropolitanos de Lisboa

## Period

2021-2022

## Total

44 531.00€

## CERIS

1 500.00€

## Project Website

[u-shift.github.io/biclar](https://u-shift.github.io/biclar)